

# PEPIN PRECAST

59 Shaw Road, Sanford ME 04073

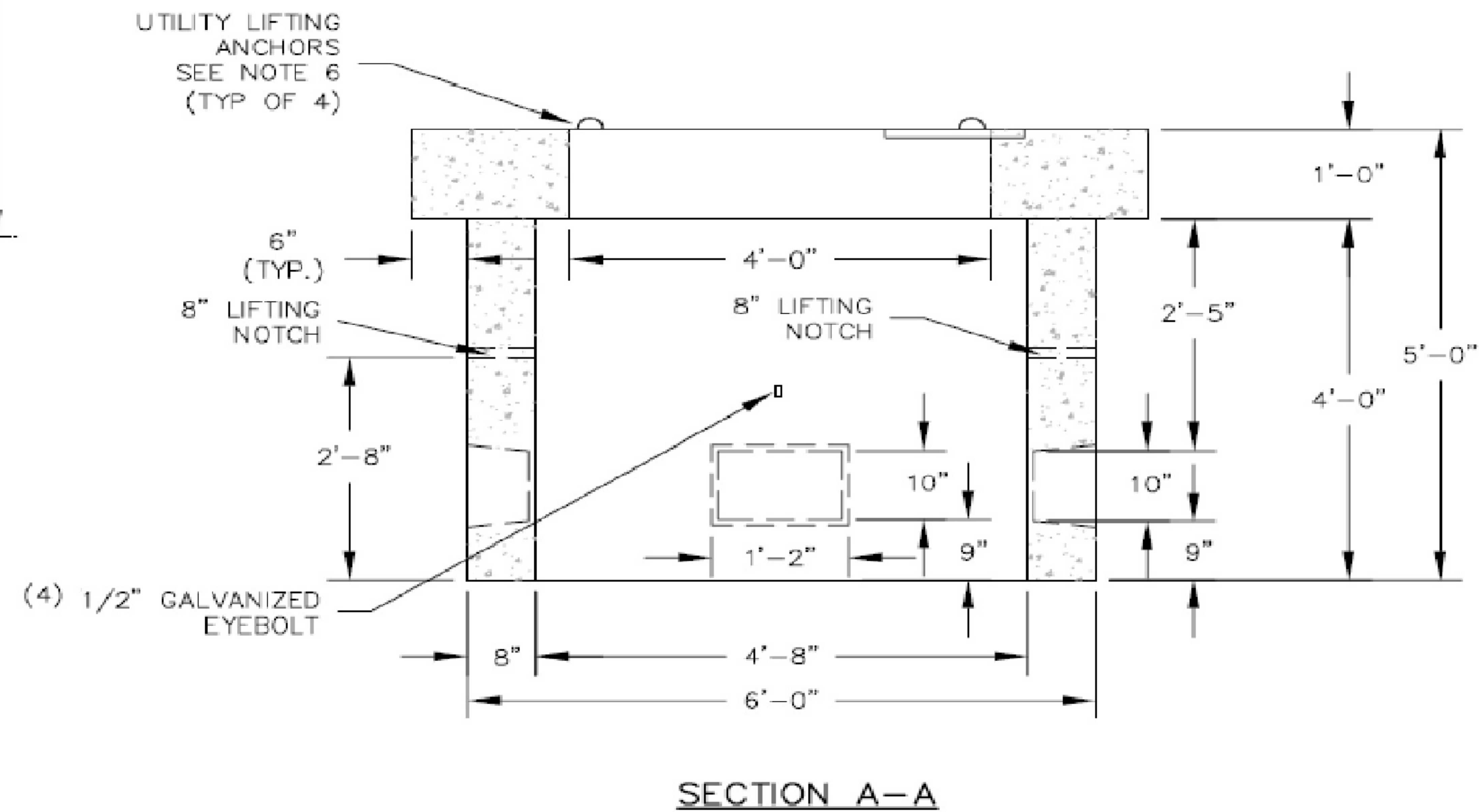
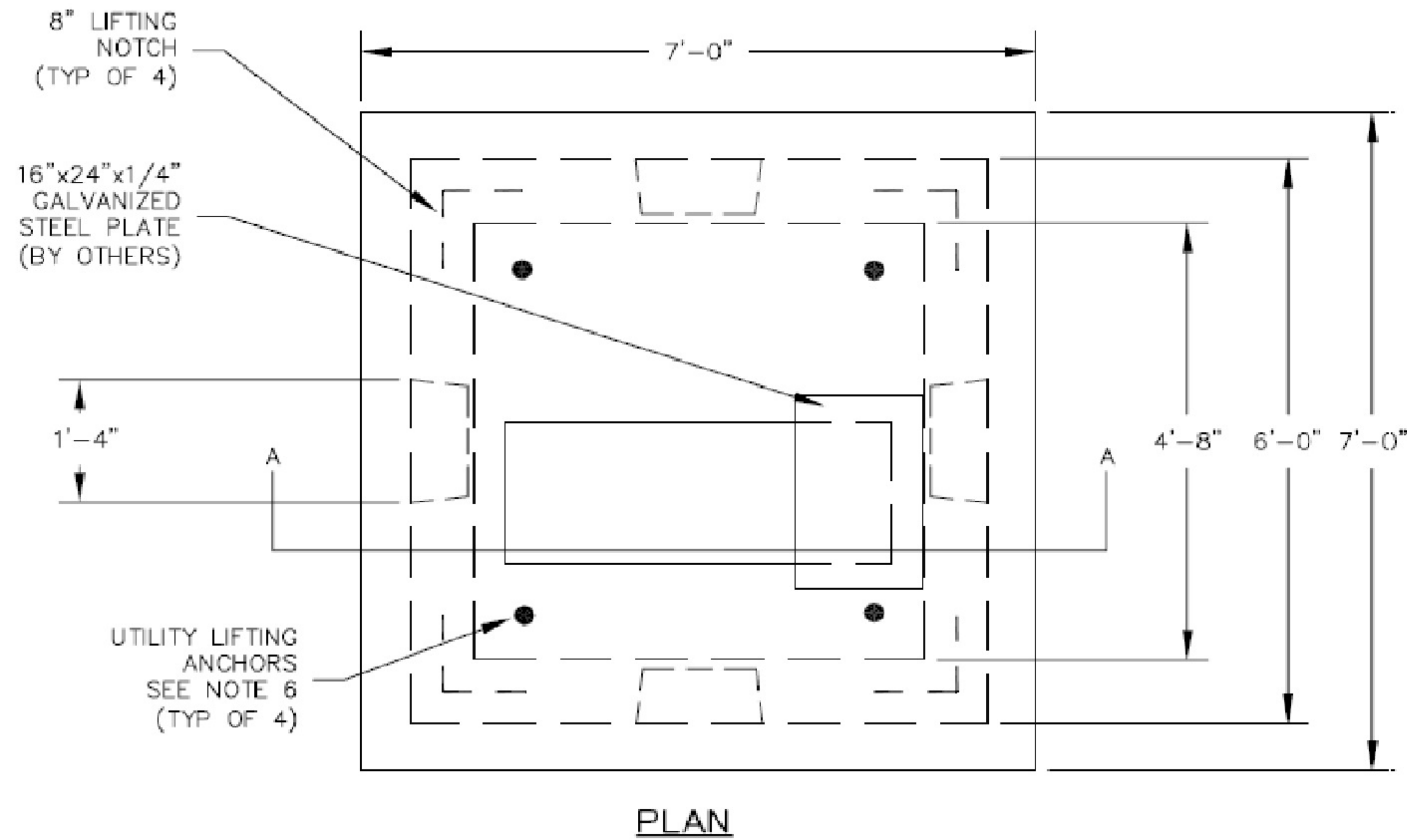
Tel: (207)-324-6125

WWW.RPEPIN.COM

A Division of R. Pepin & Sons Inc.

3 Phase 7'X7' Transformer Pads

75-500 KVA



**NOTES:**

1. CONCRETE: 5,000 PSI @ 28 DAYS.
2. CEMENT: PORTLAND TYPE II PER ASTM C150.
3. REINFORCING: PER ASTM A615. GRADE 40 OR 60.
4. MEETS ALL CENTRAL MAINE POWER COMPANY SPECIFICATIONS FOR 75-500 KVA CONDITIONS.
5. APPROX. WEIGHT: 16,500 LBS.
6. UTILITY LIFT ANCHORS: LUA54G RATED AT 3,860(lbs) EACH BY A.L. PATTERSON, INC.